

Phaser®  
3600  
A4  
Black and White  
Laser Printer



# Xerox Phaser® 3600 Laser Printer Value-packed performance



# Phaser® 3600 Laser Printer

**Pure printing pleasure.** Combining surprisingly high-end performance features with consistent reliability – all in a compact device that's built to keep your productivity high and your costs low.

## The power to please

The Phaser 3600 laser printer brings Xerox quality and superior performance to single users and small workgroups with demanding productivity.

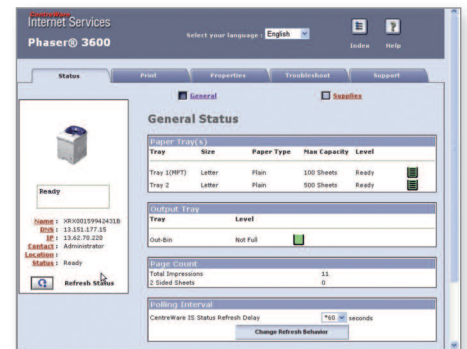
- **Fast printing performance.** Delivers results at up to 38 ppm – plenty of speed to keep up with your print workload.
- **A first-page-out time as fast as nine seconds.** This means you spend less time waiting for print jobs and more time staying productive.
- **Complex print jobs, handled with ease.** A robust 400 MHz processor works behind the scenes to quickly take care of whatever comes its way – even multi-page jobs loaded with graphics.
- **Network printing.** Network printing (standard on the N and EDN configurations) makes the Phaser 3600 laser printer a more powerful office ally, helping more users get more work done.
- **Get even more helpful capabilities.** Features include Secure Print, which keeps a private print job in the queue until released by the job owner, and RAM collation, which speeds up larger print jobs by quickly processing multiple sets of multi-page documents.

## Unbeatable value

With advanced features typically found on higher-priced laser printers, the Phaser 3600 offers more performance for less.

- **More speed, better features and a robust, user-friendly design.** No other printer in its class matches the Phaser 3600 laser printer's total value.
- **Print more without interruption.** There are two standard paper trays holding a total of 600 sheets. Need more capacity? An additional 500-sheet tray is available.
- **Affordability comes standard.** Low cost per page and helpful cost-saving features like toner-save and energy-save modes, plus automatic two-sided printing\* and N-Up printing means more efficient paper usage.
- **The print cartridge is easy to replace.** You may choose standard-capacity at a lower price, or high-capacity, for greater print volumes and reduced total cost of ownership.
- **We stand behind our promise.** Outstanding reliability and performance are backed by a standard one-year on-site warranty.

\*standard on EDN configuration



## Xerox simplicity

Helpful administration tools, like CentreWare IS internal web server, make it fast and easy to manage everyday usage. You get quick and convenient access to a wealth of features, including printer and job status, and toner volume updates, media availability, in-depth accounting information, simplified printer installation and network administration and more.

## The security your business needs

### Safe documents

- Secure print holds jobs in the queue until released with a PIN.
- Watermark customises documents with words, such as "Confidential".

### A good network citizen

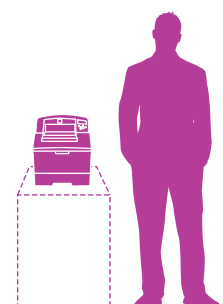
- IEEE 802.1x protocol ensures that connected printers have proper authorisation.
- HTTP enables secure device administration.
- SNMP v3.0 provides encrypted network management.

## Phaser® 3600 Quick Facts

- Print up to 38 ppm
- 1200 x 1200 image quality
- 400 MHz processor
- 200,000 pages/month duty cycle
- 600-sheet capacity, expandable to 1,100 sheets



399 x 478 x 383 mm



## The capacity to do more

The Phaser 3600 laser printer offers more printing features for fast-paced businesses on a budget. A choice of configurations are available to meet the needs of a busy single user or a small work team, while more options further expand the printer's capabilities.

**Simple layout and easy-to-read** two-line front panel user interface displays the printer status, error messages and jobs in progress.



- 1 Automatic two-sided printing.** Standard on the Phaser 3600EDN and available as an option on the Phaser 3600B and 3600N models.
- 2 100-sheet multipurpose tray.** Handles a variety of paper, from 60 – 163 gsm, including envelopes, labels, business cards and other speciality media.
- 3 500-sheet input tray.** Feeds 60 – 105 gsm paper.
- 4 Add an additional 500-sheet input tray.** Boosts total paper input capacity to 1,100 sheets.



### Phaser® 3600 Printer Configurations

Phaser 3600B	Phaser 3600N	Phaser 3600EDN	Options
<ul style="list-style-type: none"> <li>• 2-Tray, 600-sheet capacity</li> <li>• 64 MB memory (expandable to 512 MB)</li> </ul>	<ul style="list-style-type: none"> <li>• 2-Tray, 600-sheet capacity</li> <li>• 10/100Base-TX Ethernet</li> <li>• 128 MB memory (expandable to 512 MB)</li> </ul>	<ul style="list-style-type: none"> <li>• 2-Tray, 600-sheet capacity</li> <li>• Automatic two-sided printing</li> <li>• 10/100Base-TX Ethernet</li> <li>• 128 MB memory (expandable to 512 MB)</li> </ul>	<ul style="list-style-type: none"> <li>• Automatic two-sided printing (standard on 3600EDN)</li> <li>• One additional 500-sheet input tray</li> <li>• Additional memory</li> <li>• Wireless network adaptor</li> </ul>

# Phaser® 3600

## Black and white laser printer



	3600B	3600N	3600EDN
<b>Speed</b>	Up to 38 ppm		
<b>Duty Cycle</b>	200,000 pages / month		
<b>Paper Handling</b>	<b>Tray 1 (MPT):</b> 100 sheets; Custom sizes: 76 x 127 mm to 216 x 356 mm <b>Tray 2:</b> 500 sheets; Selectable sizes from A6 to A4 <b>Tray 3:</b> 500 sheets; Selectable sizes from A6 to A4 (1,100-sheet total capacity)		
Paper input	Standard		
	Optional		
Paper output	250 sheet face-down, 100 sheet face-up		
Automatic two-sided printing	Optional		Standard
<b>Print</b>	As fast as 9 seconds		
First-page-out-time	1200 x 1200 image quality		
Resolution (max)	400 MHz		
Processor	64 MB / 512 MB	128 MB / 512 MB	
Memory (std / max)	Parallel, USB 2.0		10/100Base-TX Ethernet, Parallel, USB 2.0
Connectivity	PostScript® 3™ compatibility, PCL®6, PCL®5e emulation		
Page description languages	Smart Trays, Booklet printing, Scaling, Fit to page, Watermarks, Overlays, Posters, Custom-size pages, Covers, N-up, Toner save mode, Secure print*, Collation*		
Print features	Standard		
<b>Warranty</b>	One-year on-site warranty		

\*Standard on N/EDN Configurations, Optional on B Configuration

### Device Management

Phaser Installer, CentreWare® IS Embedded Web Server\*, CentreWare® Web\*, Font management utility\*

\*3600N and 3600EDN

### Print Drivers

Windows® 2000/XP/2003 Server, Vista, Mac OS® 8.6–9.2, 10.1–10.5, Novell Netware® 4.x/5.x/6, Various Linux OS including Red Hat® 8–9, Fedora™ Core 1–4, Mandrake 9.2–10.1, SuSE 8.2–9.2, Unix HP-UX, Sun Solaris, SCO, Xerox Walk-Up® Printer Drivers

### Font Capability

4 MB flash memory for fonts and macros  
136 PostScript® fonts; 68 PCL® fonts

### Media Handling

Tray 1: 60–163 gsm  
Tray 2 and Tray 3 (optional): 60–105 gsm  
Two-sided output: 75–90 gsm

### Media types

Plain paper, envelopes, labels, transparencies, card stock

### Operating Environment

Temperature: 10° to 32°C  
Humidity: 20% to 80%  
Sound pressure: Printing: 56.0 dB(A), Standby: 35.0 dB(A)  
Warm-up time (from power save): 31 seconds or less, FPOT from power save: 40 seconds

### Electrical

Power: 220–240 VAC, 50/60 Hz  
Power consumption: Printing: 700 W, Standby: 130 W, Power save: 13 W, 3600EDN: ENERGY STAR® qualified

### Dimensions (WxDxH)

399 x 478 x 383 mm  
Weight: 17.9 kg

### Certifications

Listed to UL 60950-1/CSA 60950-1-03, 1st Edition, FDA/CDRH – Class 1 Laser Product, FCC Part 15, Class B, Canada ICES-003, Class B, CE marked, Low Voltage Directive 2006/95/EC, EN 60950-1, 1st Edition, EN 60825-1 – Class 1 Laser Product, EMC Directive 2004/108/EC, EN 55022, Class B, EN 55022, Class B, RoHS Directive 2002/95/EC, WEEE Directive 2002/96/EC

### What comes in the box

- Phaser 3600 Printer
- Print cartridge (7,000 print capacity)
- World Kit (includes Software and documentation CD, Registration card, Warranty booklet)
- USB Cable
- Power cord

### Supplies Recycling Programme

Consumables for the Phaser 3600 are part of the Xerox Green World Alliance Supplies Recycling Programme. For more information, please visit the Green World Alliance website at [www.xerox.com/gwa](http://www.xerox.com/gwa)

### Supplies

Print cartridge: 7,000 pages<sup>1</sup> 106R01370  
Print cartridge: 14,000 pages<sup>1</sup> 106R01371

### Options

Duplex Module 097S03756  
500-Sheet Feeder 097N01673  
64 MB Memory 097S03759  
128 MB Memory 097S03760  
256 MB Memory 097S03761  
Wireless Network Adaptor (not available on 3600B)  
- European Power Converter 097S03741  
- UK Power Converter 097S03742

<sup>1</sup> Average standard pages. Declared Yield in accordance with ISO/IEC 19752. Yield will vary based on image, area coverage and print mode.

