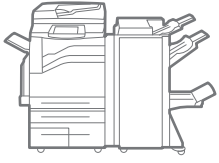


WorkCentre®  
7425 / 7428 / 7435  
A3  
Colour  
Multifunction System



Xerox WorkCentre®  
7425 / 7428 / 7435  
Multifunction System  
Colourful innovation



# WorkCentre® 7425 / 7428 / 7435 Multifunction System

**Innovation that drives document production to a new level.** Breakthrough technologies deliver superb colour and speed, better reliability, easy-to-use advanced features and environmentally conscious engineering.



**Get high-resolution colour where it counts. The WorkCentre 7425/7428/7435 gives your business documents the competitive edge.**

## Impress with great image quality

The WorkCentre 7425/7428/7435 makes great colour look easy, thanks to innovative Xerox technology.

- **Breakthrough 1200 x 2400 dpi print technology** produces amazing, high-resolution output. Sharp images and crisp text take printing to a whole new level.
- **Consistent, printshop-quality** text and images in PostScript, PCL6/ PCL5c, PDF and XPS printer languages.
- **Xerox Emulsion Aggregation (EA) toner** provides consistently higher resolution and sharper image quality. EA toner particles are smaller and more symmetrical than conventional toners.

### WorkCentre® 7425 / 7428 / 7435 Quick Facts

- Print/copy up to 20/28/35 ppm colour and 25/28/35 ppm black and white
- Paper capacity up to 5,140 sheets
- 1200 x 2400 dpi resolution



Print / Copy / Scan / Fax / Email



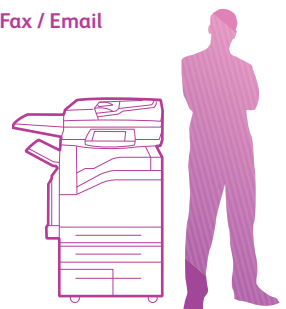
SRA3

35

ppm colour

WxDxH (Base):

1,046 x 678 x 1,125 mm



## Enjoy outstanding reliability and convenience

New advances in Xerox technology create an extremely reliable print engine, with additional design features focused on great user experience.

- **Smaller overall footprint.** Our innovative new imaging system takes up less space inside the unit than in traditional printers, enabling us to pack more output and finishing capability into a smaller space.
- **Fewer maintenance calls and greater uptime,** as this device has fewer moving parts than conventional laser printers.
- **Optional USB Thumbdrive Printing** lets users print from USB storage media.
- **Optional Media Card Reader** lets users to print from other media such as SD cards.
- **High-capacity paper trays** (up to 5,140 sheets) mean fewer trips to load paper, especially during long print jobs.
- **Page-level programming** lets you specify unique driver settings for individual pages in a document.
- **Fax-forwarding feature** lets you forward incoming faxes to an email address, fax number or a document repository.

## Better for the environment

Designed with the environment in mind, the WorkCentre 7425 / 7428 / 7435 conserves precious resources without sacrificing performance or quality.

- **Blue Angel-compliant.** Meets requirements for the Blue Angel environmental award, considered the most stringent for information technology equipment.
- **Energy Star-compliant,** it consumes less power than other laser devices in its class. For example, we've reduced sleep power consumption to less than 2 watts, significantly less than most colour laser printers.

- **Less noise pollution.** The cooling fan is turned off in sleep mode, reducing noise levels to 20dB. In full operation the noise level is 56dB or less, making it one of the quietest multifunction devices in its class.
- **Fewer CO<sub>2</sub> emissions.** Where possible, we use biomass plastic. Derived from organic residues, it produces 16 percent fewer CO<sub>2</sub> emissions during the manufacturing process, compared with more traditional plastic.
- **Environmentally friendly toner.** Xerox EA toner emits 65 percent less carbon dioxide during manufacturing.



WorkCentre 7435 with Work Surface

# Highly usable, highly productive

The WorkCentre 7425/7428/7435 offers solid performance backed by unprecedented ease of use. User-centric design makes it easy to take advantage of its advanced features.

## Get more work done, faster

Fast print speeds and a host of time-saving features let you spend less time at the printer and more time focusing on the job.

- **Print speeds that match the speed of your business.** Outputs colour documents at a fast 20 ppm, 28 ppm or 35 ppm, depending on the model chosen.
- **Save time while you're saving paper.** Our 100% efficient two-sided printing is as fast as one-sided printing.
- **Quick warm-up time** of less than 30 seconds from sleep mode means you spend less time waiting for your job to print.
- **Print Around feature means you don't wait** for the problem print job ahead of yours to clear. It holds a job needing resources (such as a different paper size) and prints the next job in the queue.
- **Extend colour control and performance** with the optional EFI Fiery Network Server, providing printshop-level colour management for fast, consistent colour, print after print.
- **Concurrently scan, print, copy, fax and route files** to their destination. The Xerox multitasking network controller handles multiple office tasks with speed and efficiency, maximising your productivity.
- **Simplify common document processes with Xerox Extensible Interface Platform (EIP).** Combine your EIP-enabled WorkCentre 7425/7428/7435 device with EIP-enabled software, to provide personalised solutions you can access right from the device touch screen.

## Advanced scanning

Now it's easy to bring paper documents into the network, with the sophisticated scanning tools you'll find in this leading-edge multifunction system.

- **Create searchable PDF/XPS files at the device.** Scan in a paper document and receive text-searchable PDF, PDF/A and XPS files directly to your desktop, network folder or email address.
- **Route scanned documents with job flow sheets.** Scan once, and your documents are converted to PDF, JPG or TIFF files and are delivered directly to your computer or network folders, via email, fax, iFax or hardcopy output.
- **Lightweight directory access protocol (LDAP) support** means your users can search your network's address book to find recipient's address.
- **Scan to Home feature** allows documents to be scanned automatically into a designated folder on an authenticated computer, where they can be archived for later use.
- **Scan to Folder** stores files on the device's hard drive, where they can be printed and deleted or retrieved at a user's desktop.
- **Smaller, network-friendly files.** JBIG 2 and MRC scan compression technologies optimise scan performance, providing significantly faster transmission speeds and reducing network load and storage space on network and mail servers.

## Easy to use

We've designed the WorkCentre with office users in mind, ensuring that the tasks they need most are right at hand.

- **Advanced features become intuitive,** thanks to the easy-to use Xerox interface.
- **Optional thumbnail display makes retrieval easier.** Documents stored on the hard drive are displayed as icons on the touch screen.
- **Integrates easily** with 3rd-party workflow applications to extend and fine-tune capabilities such as accounting and document management.
- **Xerox Smart Kit™ technology** constantly monitors easy-to-change critical components of the WorkCentre device to predict and prevent downtime.



**Large, intuitive touch screen** puts 90 percent of the most commonly used features on the first screen. No more time wasted searching for the feature you need!



**1 High-Capacity Feeder holds up to 2,000 sheets of paper.** Choose our 2,180-sheet capacity (3 Tray option) or our 3,140-sheet capacity model (High-Capacity Tandem Tray), then add our High Capacity Feeder to bring total capacity to 5,140 sheets.

**2 Exceptional media flexibility.** Handles a wider range of media types and weights from more trays than most devices in its class. It supports up to 256 gsm and transparencies (with separators).

**3 Print envelopes easily** using our optional dedicated envelope tray.

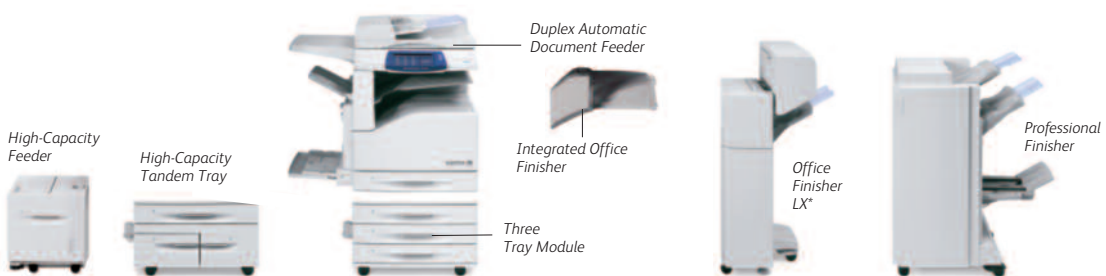
**4 Large work surface** (optional) gives you plenty of room to sort documents.

**5 Integrated Office Finisher** (optional zero footprint finishing) lets you handle standard finishing chores without adding to the device footprint.



**6 Office Finisher** (optional) gives you advanced finishing functions at a value price.

**7 Professional Finisher** (optional) adds 50-sheet multiposition stapling, hole punch, V-fold and saddle-stitch booklet making.



\* Shown with Booklet Maker.

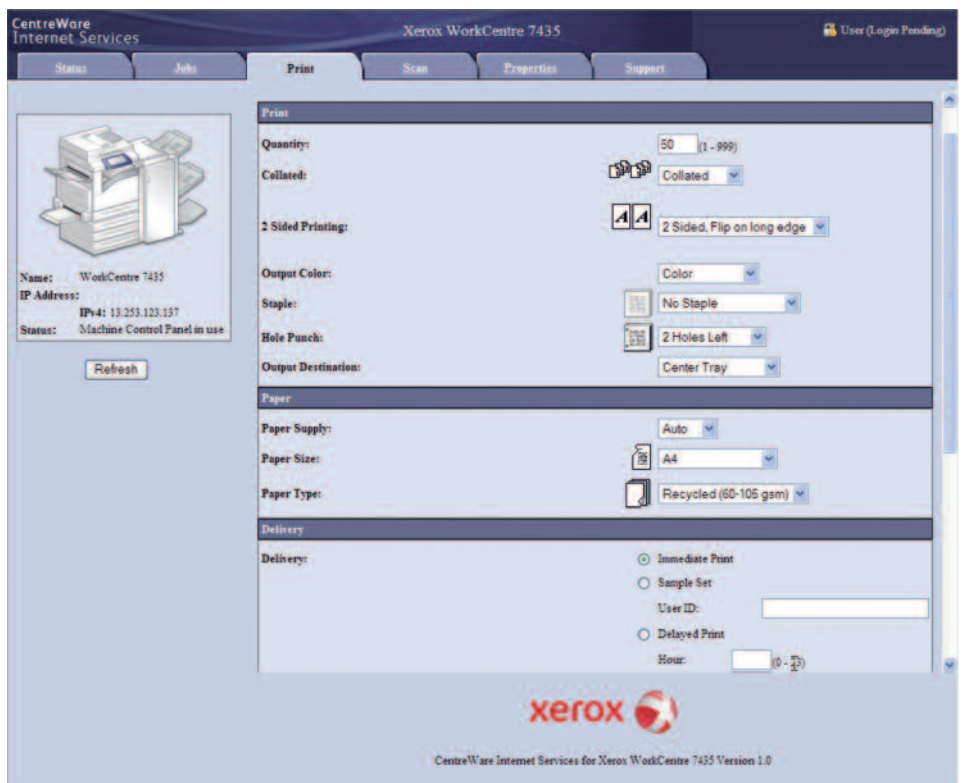
# Focus on manageability

The WorkCentre 7425/7428/7435 is easy to install, support and maintain. Its superb usability reduces help desk calls, and its ability to scan, copy and fax with ease means it can replace several standalone devices. That's great news for your IT staff, as it frees up their time to concentrate on business-critical tasks.

## No-hassle management reduces IT support costs

Take full advantage of the latest Xerox engineering and tools to consolidate and manage output requirements in your office.

- **Simplified driver management** with Xerox Global Print Driver (X-GPD) and Xerox Mobile Express Driver (X-MED). X-GPD, the first truly universal print driver, supports Xerox and most non-Xerox devices on the network. X-MED lets your mobile users easily locate and print to any authorised device on the network, without tedious setup. Save your favourite print settings for each application and use them with any supported printer and multifunction system.
- **Driverless printing for remote users** with CentreWare Internet Services (CWIS) web utility. Any connected computer can immediately output PDF, TIFF and PRN files from any network computer, without using a print driver at all. CWIS allows administrators to configure the device, upload address books, monitor usage and consumables remotely and establish auditing capabilities.
- **CentreWare Web simplifies device management** by allowing your administrators to install, configure, manage, monitor and report on all devices, Xerox and non-Xerox, across the network.



## Upgrade to the Power of Fiery

Add an EFI Fiery Network Server to the WorkCentre 7425/7428/7435 and get a wealth of easy-to-use colour management controls, powerful productivity features, and superior workflow tools.

- Easily set-up jobs and automate job submission with the intuitive bi-directional EFI™ Driver.
- Produce sophisticated results with Booklet Maker. It makes producing complex documents easier by utilising a wizard workflow that guides the user through the entire process.
- Produce accurate, consistent colour across applications, computer platforms and colour file formats with EFI™ Fiery ColorWise.
- Increase throughput with Fiery Smart RIP technology.
- Get precise and consistent corporate colours across all documents with a PANTONE® Colour Calibrated printing solution
- Create powerful, personalised communications, right from your desktop with Fiery FreeForm variable data printing and your favourite document creation package.
- Provide high levels of security and reliability with tools to validate, authorise and limit access to the Fiery

# Control access, manage costs

The WorkCentre 7425/7428/7435 puts you in control, with some of the most advanced output security features in the industry. You control who sees sensitive documents, whether they're faxed or printed, in colour or black and white. And our advanced reporting and management tools help you keep costs down without sacrificing quality.

## Enhanced security features safeguard your documents

The WorkCentre 7425/7428/7435 includes the latest in document security technologies, ensuring that confidential documents stay confidential.

- **IPv6-ready for better security, improved addressability.** Take advantage of IPv6, the next-generation Internet addressing protocol, for improved security, routing and auto configuration on your network.
- **State-of-the art security standards.** The WorkCentre 7425/7428/7435 conforms to the latest industry standards for network security, supporting IPSec to encrypt document content, SNMPv3 to securely transfer information to users and 802.1x to securely authenticate network devices before allowing document access. Submitted for full device Common Criteria Certification.

## Cost-effective management

The WorkCentre 7425/7428/7435 moves beyond "business as usual" documents with an exceptional range of solutions plus support for many more. Fine-tune it for your business with additional accounting management applications.

- **Accurately track device usage remotely via the web.** Xerox Standard Accounting monitors not only the document pages your office produces but also who produced them. Manage access and gather data for print, copy, scan and fax output — black and white and colour.
- **Network Accounting / Job-based Accounting** ensures accurate billing of device output to the correct department using one of several third-party billing solutions.

- **Perfect colour control for the cost-conscious.** You're in charge of colour usage. Easily direct who can use colour in documents and when they can use it, based on existing LDAP user lists.
- **Automatic colour-sensing** lets the WorkCentre 7425/7428/7435 automatically detect the use of colour in a document and apply the appropriate accounting charges.
- **MeterAssistant™** automatically collects and securely submits your device meter reads to increase billing accuracy.

## Highest level security provides additional protection for sensitive information

- **Secure Watermark** (optional) prevents unauthorised hard copy duplication using restriction codes that prohibit copying, printing, scanning or faxing.
- **Secure Fax** ensures that only authorised users are permitted to see sensitive faxes.
- **Secure Access Unified ID System** (optional) enables users to log into the device using either a proximity card or a swipe security card, providing both additional security and the ability to identify and track individuals' usage.
- **Image Overwrite** (optional) ensures that scanned documents are completely erased from your device, preventing unauthorised copying of sensitive material.
- **Password protected and encrypted PDF** turns scanned documents into password-protected PDFs directly from the front panel.
- **Encrypted email, print and hard disk**, along with FIPS 140-compliant encryption, provides an additional layer of security against unauthorised users.

		WorkCentre 7425	WorkCentre 7428	WorkCentre 7435
<b>Speed</b>		Up to 20 ppm colour / 25 black and white	Up to 28 ppm colour / 28 black and white	Up to 35 ppm colour / 35 black and white
<b>Duty Cycle</b>		Up to 60,000 pages / month	Up to 80,000 pages / month	Up to 105,000 pages / month
<b>Paper Handling</b>		<b>Duplex Automatic Document Feeder:</b> 75 sheets; Size: 148 x 210 mm to 297 x 420 mm <b>Bypass Tray:</b> 100 sheets; Size: 105 x 148 mm to SRA3 <b>Tray 1:</b> 520 sheets; Sizes: 139.7 x 182 mm to A3		
Paper input	Standard			
	Optional	<b>3 Tray Option (Total 2,180 sheets):</b> Adds three 520-sheet paper trays; Size: 139.7 x 182 mm to SRA3 <b>High-Capacity Tandem Tray (Total 3,140 sheets):</b> Adds one 520-sheet paper tray; Size: 139.7 x 182 mm to SRA3, and two trays; Size: A4, totaling 2,000 sheets <b>High Capacity Feeder (HCF):</b> 2,000 sheets; Size A4 long edge feed <b>Optional Envelope Feeder:</b> Up to 60 envelopes, including DL, C5 and C6 sizes		
Finishing	Standard	<b>Dual Offset Catch Tray:</b> 250-sheets each <b>Face Up Tray:</b> 100 sheets		
	Optional	<b>Integrated Office Finisher:</b> 500-sheet stacker, 50 sheets stapled, single-position stapling <b>Office Finisher LX:</b> 2,000-sheet stacker, 50 sheets stapled, 3-position stapling, optional hole-punch, optional booklet maker (score, saddle stitch) <b>Booklet Maker</b> (requires Office Finisher) <b>Professional Finisher:</b> 1,500-sheet stacker and 500-sheet top tray, 50-sheet multiposition stapling and hole punch, saddle-stitch booklet maker, V-Fold <b>Convenience Stapler:</b> staples 50-sheets (based on 75 gsm)		
<b>Copy</b>				
First-page-out-time (as fast as)		8.7 seconds colour / 6.7 seconds black and white	6.4 seconds colour / 5.0 seconds black and white	6.4 seconds colour / 5.0 seconds black and white
Copy resolution		600 x 600 dpi		
Copy features		Automatic two-sided, Colour touch screen interface, Electronic pre-collation, Automatic tray selection, Build Job, Negative/Mirror image, Automatic booklet creation, Multi-up, Auto RE, Mixed-size originals, Covers insertion, Sample set, Book copying, Store and recall job programming, Annotation, Auto colour selection, Area designation, Poster mode, Watermarks, Contone photo mode, ID Card Copy		
<b>Print</b>				
Resolution (max)		1200 x 2400 dpi		
Processor		667 MHz		
PDL		Adobe® PostScript® 3™ (optional), PDF, XPS®, PCL® 5c / PCL 6 emulations, HP-GL2™		
Connectivity		10/100Base-TX Ethernet, 10Base2, 10Base5 (via adapter), High-Speed USB 2.0 direct print, Wireless Ethernet 802.11b (via third-party adapters), Parallel (optional)		
Memory		1.5 GB minimum plus 40 GB hard drive		
Print features		Automatic two-sided, Secure Print, Delay print, Sample set, Booklet creation, Cover selection, Paper selection by attribute, N-up, Watermarks, Banner sheets, Fit to new paper size, Transparency Separators, Output tray selection, Store and recall driver settings, toner saver		
<b>Fax</b>	Optional	Walkup fax (one-line and three-line options) with Internet fax, Network Server Fax Enablement Kit (requires Scanning Enablement Kit)		
Fax features		LAN fax, Fax Forward, Duplex Send and Receive, print on fax up to A3, Fax Build Job		
<b>Scan</b>	Optional	Scanning Enablement Kit: Scan to Email, Scan to Folder, Scan to FTP, Text searchable PDF, PDF/A, XPS, Linearised PDF, JPEG, TIFF		
Additional options		Scan to PC Desktop™, Various Xerox Alliance Partner Solutions, SMARTsend®		
<b>Accounting</b>				
	Standard	Auditron, Xerox Standard Accounting – Copy, Print, Fax, Scan; Colour Access for copy and print via Active Directory, Enabling Colour access control		
	Optional	Network Accounting/Job Based Accounting Enablement Kit (Alliance Partners)		
<b>Security</b>				
	Standard	Secure Print, Authentication with LDAP/Kerberos/SMB, Password Protected PDF, Encrypted Disk, FIPS 140 encryption, Encrypted Email, IPsec, 802.1x, SNMP v3.0		
	Optional	Image Overwrite Security, Secure Watermark, Secure Access Unified ID System		
<b>Operating Systems</b>		Windows 2000/XP/Server 2003/Vista; Mac OS 10.3 and above; AIX 51 v5.3; HP UX 11.0/11i v2; Solaris 8/9/10; Linux Fedora Core 1/5; Red Hat ES4; SUSE 10.x		
<b>Other Options</b>		EFI Fiery Network Server, Media Card reader, USB memory print, Thumbnail Preview, Work Surface, Foreign Device Interface, Parallel Print Interface, Convenience Stapler		



Call today. For more information, call or visit us at [www.xerox.com/office](http://www.xerox.com/office)

